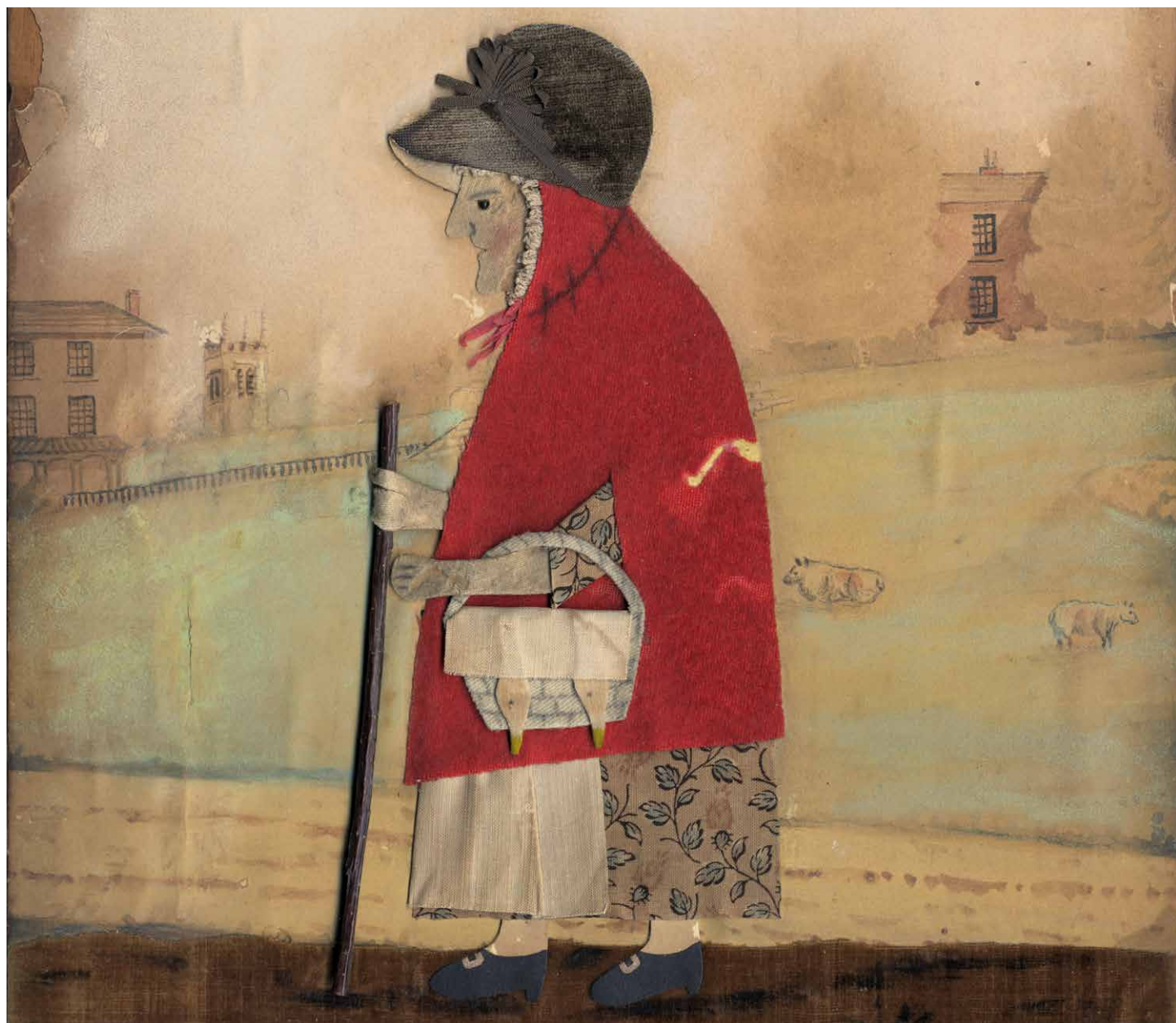


Parish News

SERVING THE COMMUNITIES OF FRANT, ERIDGE & BELLS YEW GREEN



'The Goosewoman', detail, by George Smart, c.1830s

IN THIS ISSUE ...

3

Letter from the Rectory by the Reverend Brendan Martin

4

Church Services, features & News from the Pews

7

Lost and found: Two artworks by George Smart are returned to Frant

8

News on the Queen's Green Canopy and how to get involved

11

Parish Council details on the proposed puffin crossing in Frant

14

What's on in the Parish: events, useful contacts & dates

WADHURST OPTICIANS & HEARING CENTRE

Your local optical & hearing specialist

Hear more clearly with our earwax removal service

Wadhurst Opticians & Hearing Centre offer a complete Microsuction service for the removal of earwax.

To book your appointment
please call: 01892 782674



STORE ANYTHING

FLEXIBLE, AFFORDABLE HOUSEHOLD & BUSINESS STORAGE

- Best value household and business storage in and around Tunbridge Wells.
- Immaculate, brand-new, secure containers in a range of sizes.
- Access your unit 24 hours a day, 7 days a week.
- Drive right up to your container to unload.



Call our friendly team now for a quote:
Store Anything | Telephone: 01892 752818
www.storeanything.co.uk

Unit 1, Stubby Grove Works, Bells Yew Green Road, Frant, East Sussex TN3 9BT



Skippers Hill Manor
Preparatory School



Range of Scholarships
available for children
in Years 3-8

01825 830 234

www.skippershill.com



Forge Garage, Little Bayham, Lamberhurst, Kent TN3 8BB

Telephone: Lamberhurst (01892) 890201

Email: tob.office@btconnect.com

Masson

Masson Joinery
Hand crafted kitchens,
cabinetry and joinery

01892 750 351
info@massonjoinery.co.uk
massonjoinery.co.uk

@massonjoinery



From the Rectory



It's going to be a great year.

I don't think I have ever been so excited about the prospect of spring. The evenings are brightening up, the bulbs are coming out and with these past two years of difficulties, distress and even death we are now finally beginning to look forward in hope.

Things are starting to happen again, community is reengaging, groups are rebuilding, and church is evolving.

I already see more and more people in our Stables Hall coming to our Wednesday morning Coffee, and young families on Tuesday morning at Little Fishes. I have seen in the last few weeks more groups getting together and more birthday parties.

I am looking forward to having the church open daily again. I am looking forward to concerts in church again. I am looking forward to a growing number of people gathering for worship on Sunday mornings in our churches, and at Festival Church. I am looking forward to the Queen's Jubilee celebrations.

Hope has kept us going through tough times and now that hope is slowly being realised. As a Christian, hope is at the core of my faith. As I go through the ups and downs of life my Christian hope centres me, my Christian hope keeps me going.

Over these past couple of years, I have seen so many people that have felt quite overwhelmed in life, with levels of anxiety increasing, leading people to give up on hope. We have seen those who haven't been able to support a friend or family like they would have wanted in their time of need. We have had usual support networks of people broken down. We have seen people not able to get the care that they need. We have had doctors and nurses so overwhelmed by the pandemic, treatments and help has been put on hold leaving people in pain and uncertainty. We have had funerals with just a handful of people around the grave of a loved one, with family and friends left at home without comfort and support.

Everything about these past two years has elevated our sense of helplessness. We realised how much we took for granted and how much we need others. When all earthly hope evaporates what are you left with? For Christians our hope goes beyond this world and beyond this life. That is what keeps me going.

Let's make this year a great year. Let's put the effort in as a community to come together and make our part of the world full of life, laughter and friendship.

—Rev Brendan Martin



News from the Pews

After the excitement of Christmas, January and February are quiet months in church when we do mundane jobs like de cluttering the church and reviewing our numerous Health and Safety Assessments. It's the time when we recharge our batteries ready for the year ahead which is likely to be an exciting year in many ways, but hopefully in other ways a 'normal' year.

Festival Church, held on Sunday afternoons in the Rectory paddock had a break during January and February, but is back on 13th March. Wednesday Coffee Mornings, which suffered another enforced break due to rising numbers of covid cases, started again in February much to the delight of our faithful customers for whom it's an opportunity to get out of the house and meet with others.

We were very pleased to hear that we'd been chosen to be part of an initiative from the Diocese of Chichester called 'Great is Thy Faithfulness', in which selected parishes are invited to work with other rural parishes hopefully to their mutual benefit to encourage spiritual and numerical growth. In our case a team from St Albans is working with the parish of Maresfield and Nutley to see how we may help each other to

grow and to exchange information and ideas on 'best practice'.

Our Youth Ministry is one area which continued to flourish and grow throughout the difficult months and the stop start situation of the pandemic. We have modern technology to thank for enabling regular clubs and meetings to continue on line, we are also blessed in



having such good outside space which has enabled 'in person' gatherings, plus we have the creative imagination of our Youth Worker, Ed, who always comes up with something original and different to keep our young people engaged. In December he took a group on what has become an annual ice skating trip, and this term hopes to take a group to a 'laser tag' day, (which I looked up on the internet). It is a very physical activity a bit like paint balling, and about which our energetic young are very excited! In February a small group joined about 60 other young people from local churches at a music event in Tunbridge Wells organised by 'Youth for Christ' where they all had great fun. Other future events are an archery club due to begin next term, places for this are limited, look on our website for details. A holiday club in May is planned for children from the school and the church. We are hoping that as part of the 'Great is Thy Faithfulness' scheme, Ed will be able to help Maresfield and Nutley to run a holiday club some time in the summer.

Finally - '2 minutes of fun' started in February. Look out for this at the top of the Stables drive on Friday afternoons (if it's not raining).

Don't ask Ed what he does in his spare time!

St Alban's, Frant & Holy Trinity, Eridge

Rector

The Reverend Brendan Martin — 01892 752003; rectoryfrant@gmail.com



www.frantchurch.org
Churchwardens
 Jane Emler—532233
 Juliet Nightingale— 01580 200403



www.eridgechurch.org
Churchwardens
 Jonathan Lynn—864304
 Stephen Barnes—861302

Services for

March / April 2022

10:00am	Ash Wednesday Communion Service	2nd March	
9:30am	Frant as One (All Age)	6th March	Communion Service 11:15am
9:30am	Communion Service	13th March	Morning Prayer 11:15am
5.00pm	Festival Church		
9:30am	Morning Service	20th March	Communion Service 11:15am
5.00pm	Festival Church		
9:30am	Mothering Sunday	27th March	Mothering Sunday 11:15am
5.00pm	Festival Church		
9:30am	Frant as One (All Age)	3rd April	Communion Service 11:15am
9:30am	Palm Sunday as One (Communion)	10th April	Palm Sunday Service 11:15am
		14th April	Maundy Thursday 8.00pm Tenebrae Communion
10:30am	Good Friday as One	15th April	Last Hour at the Cross 2.00pm
9.30am	Easter Sunday as One	17th April	Easter Sunday 11.15am
	Communion Service		Communion Service
9.30am	Morning Service	24th April	Communion Service 11.15am

WORSHIP AT BELLS YEW GREEN

Sunday Services: 10.30am & 3.00pm / Bible Study & Prayer: Thursdays, 7.00pm / Enquiries: Peter Arrowsmith, 01892 610309



Chris Murphy
 – All aspects of interior woodwork
 – Built-in & freestanding furniture
 – Kitchen fitting & alterations
07769 790985
01892 750446
 chris.saxonbury@gmail.com
 Saxonbury Farm, Mark Cross, East Sussex TN6 3PA


THE PIANO SHOP

 KENT
 Nevill Estate Yard, Eridge, Tunbridge Wells, Kent TN3 9JR
 Tel. 01892 543233
www.thepianoshopkent.co.uk

PETER JENNER
 Jewellery maker • designer

 43 The Pantiles, Tunbridge Wells, Kent TN2 5TE 01892 521796
Specialist in Fine Hand Made Jewellery
 Bespoke commissions, contemporary collections
www.peterjenner.com

FRANT POST OFFICE & STORES
 Your local 'Megastore' Friendly & Convenient
 Post Office • Lottery • Groceries • News & Magazines
 Fruit & Veg • Household • Off Licence & Tobacco
 Sandwiches & Snacks • Craft Supplies • Dry Cleaning
 Confectionery • Gifts & Greeting Cards
01892 750229

Ian Dolwin
AIRPORT CAR SERVICES

07799604405 (01892) 731221
bookings@twacs.co.uk www.airport-car-services.co.uk


 EST 1985
TREWORK
 TUNBRIDGE WELLS
01892 750172
www.treework.co.uk
 All aspects of tree surgery including
 Felling, Pruning, Shaping,
 Thinning, Planting
 and Stump Removal
 Council Approved Contractors
 Free Site Surveys & Estimates
 Fully Insured
  

sunniva
 flooring
 The Great Hall, Mount Pleasant Road, Tunbridge Wells
 Tel: 01892 549050 | Fax: 01892 516911
 email: sunnivaflooring@yahoo.com
 Web: www.sunniva.net
 Suppliers of quality carpets and flooring for 32 years
 and proud sponsors for 20 years of:
Frant Cricket Club
 Village cricket at its best.
 To join or support us, call captain
 Dave Pearson: 07748 666501 or Tom Rider: 01892 541427

ST ALBAN'S STABLES
 A modern hall with good facilities for instructional
 classes, meetings and family gatherings of up to 60.
 – Underfloor heating and projector available –
 – Fully equipped kitchen with dishwasher –
 Viewing and booking appointments through
 JuliePascoe: 07850091428 | juliedanielle@hotmail.co.uk



Two George Smarts Come Home!

Some readers may remember an article in *Parish News* about a theft at Frant's Memorial Hall on May 7th 2015 where someone broke into the building and stole four paintings. These pictures were all presumed lost, but now two have been found and recovered.

The two in question are by George Smart, one of Frant's famous past residents, and due to the generosity of the Memorial Hall, these artworks are safely back where they belong, in Frant.

They were spotted being offered for sale through a Kent auction house who were unaware of their history. Once informed, they were withdrawn from the auction and the pair were reclaimed back through the insurers.

Their time away from Frant has not been kind to them, and has resulted in some damage (as they had been out of protective frames for over 6 years). But they are now being carefully restored and appropriate period frames are being sought for them too.

These rediscovered artworks (above) were two of three Smarts donated to the village hall in 1929 by four locals: H. Field, H.M.S. Malden, Revd J.M. Dudgeon and the woodcarver F. Rosier. The third picture (right) is still missing.

Despite spending time hanging in the hall, by 1975 they were discovered under the stage in appalling condition. *The Sussex Express* on February 28th 1975 reports that the hall committee decided not to sell them on, but to take up the offer of funds from the local school to pay for their restoration. They were pieced back together, reframed and loaned to the school where they spent some time hanging in the staff room. Then, they moved back to the hall, where they

stayed for decades until the early hours of May 7th 2015 when they were stolen.

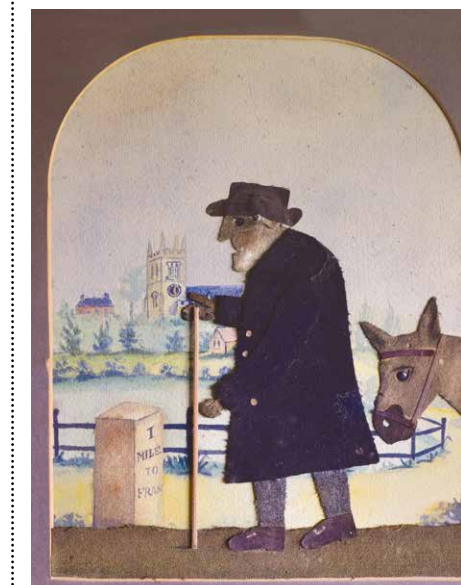
Smart was born in Middlesex on June 4th, 1774 and was buried in Frant on March 27th, 1846 in a pauper's grave. From the 1820s he featured in local guidebooks that encouraged tourists to make the journey to his shop in Frant.

George Smart's rediscovery as an artist came about after his inclusion at Tate Britain's *Folk Art* exhibition in 2014. It gathered together 21 examples of his work for the first time, and there are now over 100 known works by Smart.

Smart is now considered one of Britain's most important folk artists. He created his portraits and chimney ornaments from the off-cuts of his trade as a tailor, and these two pictures have now come back to the village where they were created nearly 200 years ago. They are a precious part of our local history, and it's very exciting to have back home.

The next part of their journey is, where they will reside? The Memorial Hall committee are currently considering several options, and once a decision is made, the parishioners of Frant will be able to enjoy these charming pieces of our village's history once again.

—Jonathan Christie
www.georgesmartfrant.wordpress.com





The Queen's Green Canopy: Get Involved

Following on from the articles in the last edition of Parish News, we are once again focusing on the Queen's Jubilee, in particular the Green Canopy initiative. This project aims to create a national canopy of trees to help reduce the impact of climate change, filter air, increase wildlife habitat and improve the environment for everyone.

Other tree plantings are planned in the coming months but there is an opportunity for everyone to get involved in planting a commemorative tree, whether in your own garden or as part of community group, a parish council, a charity or a business. Trees need to be carefully chosen to suit the habitat and cared for during the early years.

Whether you are planting one tree in your garden or have land to plant many trees, please do send in a picture of the planting! It would be wonderful to have a collage of photographs taken across the Parish to publish in the summer edition to mark the occasion. Send your photographs (as jpg attachments) to carmel.kinley@gmail.com. Thank you.

» The Queen's Green Canopy comes to life in Sussex

The Marquess of Abergavenny held a tree planting ceremony on his Eridge Park estate, near Crowborough, as part of The Queen's Green Canopy (QGC) initiative to mark the Queen's Platinum Jubilee next year and celebrate her 70 years of service.

Eridge is reputed to be the oldest enclosed deer park in England and Lord

Abergavenny was pleased to welcome nearly 50 guests, including local residents, local organisations and others with an interest in planting more trees to commemorate the Queen's Jubilee.

The tree planting on Friday December 10 was attended by the Lord-Lieutenant of East Sussex, Andrew Blackman, and Nusrat Ghani MP, who planted the two elm trees.

The Wealden MP told guests: "The Queen's Green Canopy is a wonderful concept and I am delighted to be here at Eridge Park today.

"Not only are we playing a crucial part in helping combat climate change, we are also reminding ourselves of the incredible service that our Queen has given to this country."

In his welcoming address, Lord Abergavenny explained the importance of planting trees for future generations.

He said: "At Eridge Park, we have an important role to play in preserving this wonderful estate. It is a biological Site of Special Scientific Interest, so the trees have been carefully chosen to suit the location. We are planting disease-resistant elms along this section of the Sussex border path as there used to be a beautiful line of elms bordering the road."

Andrew Blackman, The Lord-Lieutenant of East Sussex, said The Queen's Green Canopy was an excellent environmental initiative and a wonderful way to mark Her Majesty The Queen's Platinum Jubilee celebrations in 2022.

"I am delighted to be here at Eridge Park today to support the tree planting ceremony. I would urge everybody to spread the word about this country-wide initiative and, where possible, to get involved," he said.



» Edit – Amalgamate

President of COP26 plants tree on behalf of Eridge Village Hall

Joining the occasion at Eridge Park, was the President for COP26 and Minister of State at the Cabinet Office, the Right Honourable Alok Sharma MP. The Minister planted a beech tree on behalf of the Eridge Village Hall charity and dedicated it to the Queen's Green Canopy.

Mr Sharma was keen to highlight the value of the Queen's Green Canopy initiative and said: 'As COP26 President, I am a big supporter of the Queen's Green Canopy and the environmental gains we achieve through increased tree planting. I know that East Sussex, along with many other counties, is taking this task seriously and they should be congratulated.'

Lord Abergavenny said: 'It was a real show of support for the President of COP26 to come along and join our local MP, Nusrat Ghani, at the ceremony. I would also like to thank the community representatives who took the trouble to come and celebrate the tree planting.'

Nusrat Ghani said: 'The Queen's Green Canopy is a wonderful tribute to Her Majesty's exceptional service and leadership, and a positive opportunity to engage communities across the country in contributing to making our environments greener. Trees are a vital part of the UK's strategy of tackling the climate crisis and I was delighted to welcome the COP26 President to Wealden to plant a tree in Eridge Park as part of the initiative.'

The Queen's Green Canopy aims to create a national canopy of trees to help reduce the impact of climate change, filter air, increase wildlife habitat and improve the environment for all.

There is an opportunity for everyone to get involved in planting a commemorative tree, whether in your own garden or as part of a community group, a parish council, a church, a school, a charity or a business.

For more information on the Queen's Green Canopy in East Sussex visit: <https://www.ruralsussex.org.uk/what-we-do/other/queens-green-canopy/> and <https://queensgreencanopy.org/>

For information on Eridge Village Hall visit: <https://www.eridge-village-hall.co.uk/>

The Queen's Jubilee » Help needed!

The Parish Council has been meeting with various groups to discuss the upcoming celebrations for the Queen's Jubilee in June. The events will take place over three days, as follows:

Frant – Friday 3rd June
Bells Yew Green – Saturday 4th June
Eridge – Sunday 5th June

We are running a competition in the primary school for the best design for the posters and flyers and these will include the programme and timings for each day. The website will also be updated regularly so keep a look out.

We do need volunteers to help with the preparations and on the three days in June. If you are able to, please contact Rosie Barnes, our Clerk, on 07903 661581 or at clerk@frant-pc.gov.uk.

Frant School News

Our return to school for 2022 started off fully-charged and didn't stop! We have headed straight back into a busy timetable, maximising learning in a relatively short term. Classrooms were buzzing with the sharing of projects, ranging from spy gadgets in Oak class to sharing their knowledge of the solar system in Hazel. Sport has also featured heavily this term, including participating in a Girls' Football Tournament in Uplands, which our team of Year 3/4 children won – scoring 23 goals in total! Frant have also hosted a Mixed Netball Tournament, inviting Wadhurst and Stonegate to play, again resulting in both the Frant A and B team finishing in 1st and 2nd place. Here are a few of our other highlights:

» A book sale in the school hall – an opportunity for an early spring clean to pass old books on to new readers – raising over £150 for the school and all unsold books donated to charity.

» A big push on times tables where the whole school have been learning a new times table each week. This looks like adding the same number repeatedly for the younger ones; to complex corresponding division questions for the older children. There has been dancing and singing of 'Disco Tables', contributing to an inter-house

competition which is celebrated weekly on the school website.

» A PTFA quiz night, which although low in number of attendees was definitely high in levels of enthusiasm and enjoyment. Last, but not least, we also finished the term with a visit from OFSTED. The report is still waiting to be published but the staff and children represented their school incredibly well, with thanks to the parents too for their very positive contributions. The inspectors saw an incredibly dedicated team utilising the curriculum to provide stimulating lessons and create everlasting memories for the children.

I hope you have enjoyed reading our news. Please do contact the school at any time if you have any questions or would like to come in for a chat.

—Joanna Challis, Head of School

Crowborough Community Centre

» Pine Grove Crowborough TN6 1FE
Lecturer: Frank Woodgate
Title: Andy Goldsworthy – Revealing the Beauty of Nature
10th March 2022 at 2pm

We are particularly pleased to welcome Frank back to talk to us again as we had hoped to see him in July 2020, but COVID got in the way. Frank is a Lecturer and Guide at Tate Britain and Tate Modern, the Art Fund, the National Trust, U3A and other organisations. He also runs courses at Pallant House Gallery, Chichester.

Andy Goldsworthy is one of the most interesting and innovative landscape artists working in Britain today. He mostly works in the open air, using natural materials such as leaves, ice, stones or trees to make exquisitely beautiful but usually ephemeral images in the great Romantic landscape tradition. Fortunately, although most of his works eventually disintegrate, melt away or fall over, they are all carefully photographed and included in extremely desirable and lavish 'coffee-table' books.

Refreshments follow the lecture. Members free, Guests and Visitors £6. If you would like to join, please contact our Membership Secretary on 01892 663388. For any further information, contact our Secretary on 07884 428780.

News from Nus Ghani, MP

It was an absolute pleasure to welcome the COP26 President, The Right Honourable Alok Sharma MP to Wealden recently, to showcase the ways in which Wealden communities are contributing to delivering a greener future. During his visit, the President planted a tree in Eridge Park as part of the Queen's Green Canopy, talked to Hailsham Sixth Form students about the importance of looking after our environment, and visited an emission-free vehicles business in Lower Dicker.

The Queen's Green Canopy is a wonderful initiative aiming to help reduce the impact of climate change while celebrating The Queen's upcoming Platinum Jubilee and paying a tribute to Her Majesty's exceptional service. Trees are a vital part of the UK's strategy of tackling the climate crisis and I was delighted that the Minister contributed to Wealden's efforts and planted a beech tree in the historic deer park on behalf of the Eridge Village Hall charity.

Ahead of the annual Careers Fair taking place this month, the President then visited Hailsham Community College to discuss greener jobs with the Sixth Form students. The class engaged the President with insightful questions about the goals of the COP26 Climate Conference and holding other countries to account and act upon their promises. The questions from the floor were a great testament to the fantastic education they are receiving at HCC, and it was inspiring to see the students' passion for the environment and greener future.

To end his Wealden tour, the Minister learnt more about a superb local business which provides green transport for our key infrastructure hubs such as airports and seaports. JLC Group assembles emission-free vehicles directly on-site in Lower Dicker, while providing training packages, jobs, and vital experience to young engineers from local colleges including students from HCC.

Each of us has a part to play in delivering a greener future and international ambitions cannot be fulfilled without the commitment of businesses and individuals locally. I'm pleased to have had the opportunity to showcase to the President how Wealden organisations are at the forefront of accelerating the transition to net-zero and leading the delivery of this goal.

Frant Garden Club

After cancelling our planned programme for 2020, it was not until the summer of 2021 that the Garden Club started to meet up again with outdoor outings to Penshurst Place in June for a guided tour of the garden with the Head Gardener, and to Michelham Priory in September. In between we gathered in a Frant garden for tea, cake and chat joined by Colin Moat of Pineview Nursery who brought a selection of his plants to buy and learn about. We were blessed on all occasions with good weather so it was a real treat to get together again as a group after our enforced break.

In the autumn we met at the Memorial Hall for a talk from David Carey, the volunteer tree warden at Dunorlan Park, and then finally our AGM and quiz in the run-up to Christmas and, thankfully, before the omicron variant caused us to retreat inside our own homes again.

Club members were asked to vote, and as a result we shall now be holding our spring and autumn indoor meetings on Tuesday afternoons in the Frant Memorial Hall from 2.30 to 4.15 p.m. Annual membership of the Club remains at £5.

As usual 2022 got underway with our lunch at The George in February, and the programme for the remainder of the year is:

» Tuesday, 22nd March

Talk from Spadework Charity which runs a nearby garden centre, farm shop and cafe providing opportunities for trainees with learning and other disabilities

» Tuesday, 26th April

Mick Lynn talk - "Plants and Crime"

» May Afternoon outing to Chiddingstone Castle

» July Full day outing to Walmer Castle and Gardens

» September Afternoon outing to Chartwell

» Tuesday, 18th October

Irene Eltringham-Wilson talk - "Heaven and Hell"/Being the NGS County Organiser

» Tuesday, 22nd November AGM

We always welcome new members so, if you have any questions, please contact Dianna Tennant (Secretary) - 01892 752029

Frant Parish Friendship Group

Unfortunately due to the rise in the Omicron virus we were unable to celebrate the festive season with our planned Christmas tea and also our January meeting had to be cancelled. However hoping for better things in the coming months with our monthly meetings for March (24th) and April (28th) going ahead as booked, we will also be extending our programme into May. This will include a meeting with speaker on the 26th May and two sessions of Alison's exercise classes on the 5th and 19th May. Many of our speakers use screen presentations with their talks and we are pleased to announce that two members of the Group have very generously organised and paid for blinds to be installed in the Stables. This will greatly improve the blackout facility for these presentations.

Our Knit and Natter group who have continued to knit for charity all through the awful recent times are now in full swing and always looking for new recruits. The contact for this group is Vivien Waters on 01892 752110.

The exercise classes with Alison have started and have been very well received. These are twice a month on the first and third Thursdays in the month at the Stables 2.30-3.30 pm. The classes are of a gentle nature; partially chair based and are aimed at improving co-ordination, balance and flexibility. All attributes we need as we get older, Alison also includes some memory games to improve our mental agility as well as our physical. These sessions are very entertaining and an opportunity to socialise. We are extremely grateful to have received a donation from the Henry Smith charity which will greatly assist the funding of our exercise activities. In this regard we are considering the possibility of a walking group when the better weather arrives. For further information please contact the number below – all are welcome.

We are hopeful that we will be able to arrange some activities over the summer and participate in the Village Jubilee celebrations.

Members are reminded we now have an annual subscription of £3.00 plus the normal £3.00 per meeting.

The Friendship Group is a Parish community based activity and is run by volunteers. It is open to all and we welcome new members. Enquiries Valerie Palmer 01892 750559

Parish Council

» Proposed puffin crossing in Frant

Over the years, many residents have raised their concerns with the Parish Council about the dangers of crossing the main road (A267) near the school. Traffic calming measures were introduced a few years ago in an attempt to slow cars approaching from Tunbridge Wells, but this road still sees heavy, regular and often fast traffic which makes it a very dangerous place for pedestrians, particularly children crossing to and from the primary school. The Council has been working closely with its partners to explore the idea of a pedestrian crossing roughly between the Abergavenny pub and the bus stop near Fern Close, and have drawn up some plans for a new safer

crossing point for consideration.

The proposed crossing would be paid for via a mix of funds including a substantial contribution from the developer of the new housing at Fern Close II, Community Infrastructure Levy funds received by the Parish Council and possibly some match-funding from East Sussex County Council. In addition, to assist with the costs, the Parish Council has increased its precept this year, meaning you will see a slight rise in this category on your next Council Tax Bill

Following a feasibility study, ESCC determined that a puffin crossing is the most suited to this location. This type of crossing requires additional lighting; at this stage, we do not exactly how many, but it will be a minimum of 8, possibly 10,

new streetlights. We are working with our partners to ensure these lights will be the most appropriate for this sensitive location, if the crossing goes ahead, in terms of height, appearance and light 'spill'. Below are artist's impressions of how the crossing will look, in both directions, during the day and night.

The Parish Council would like to invite you to the village hall in Frant on Saturday 26th March, from 2 - 4:30pm. The drawings below will be on display, as well as one of the lanterns we are proposing to sit on top of each streetlight. Representatives from the Council will be there to answer any questions you may have. If you are not able to come along on that date then please do email the Clerk at clerk@frant-pc.gov.uk to let us know your view. We look forward to seeing you there!



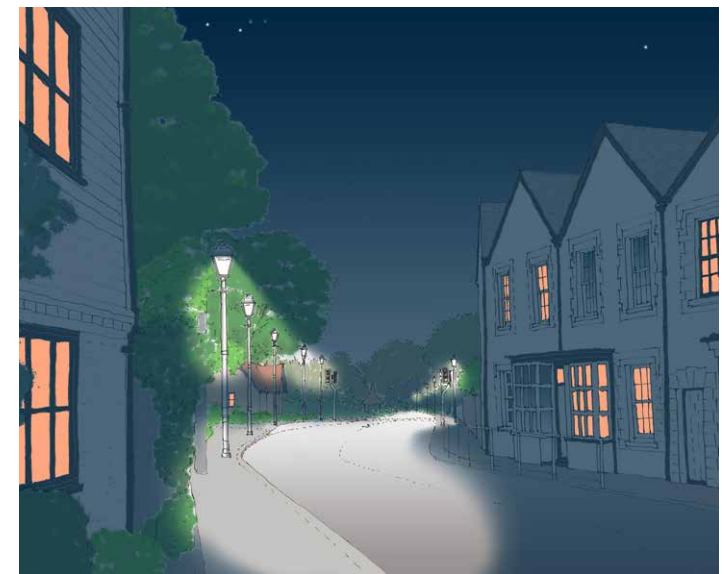
ARTIST'S IMPRESSION - DAYTIME VIEW FROM NORTH



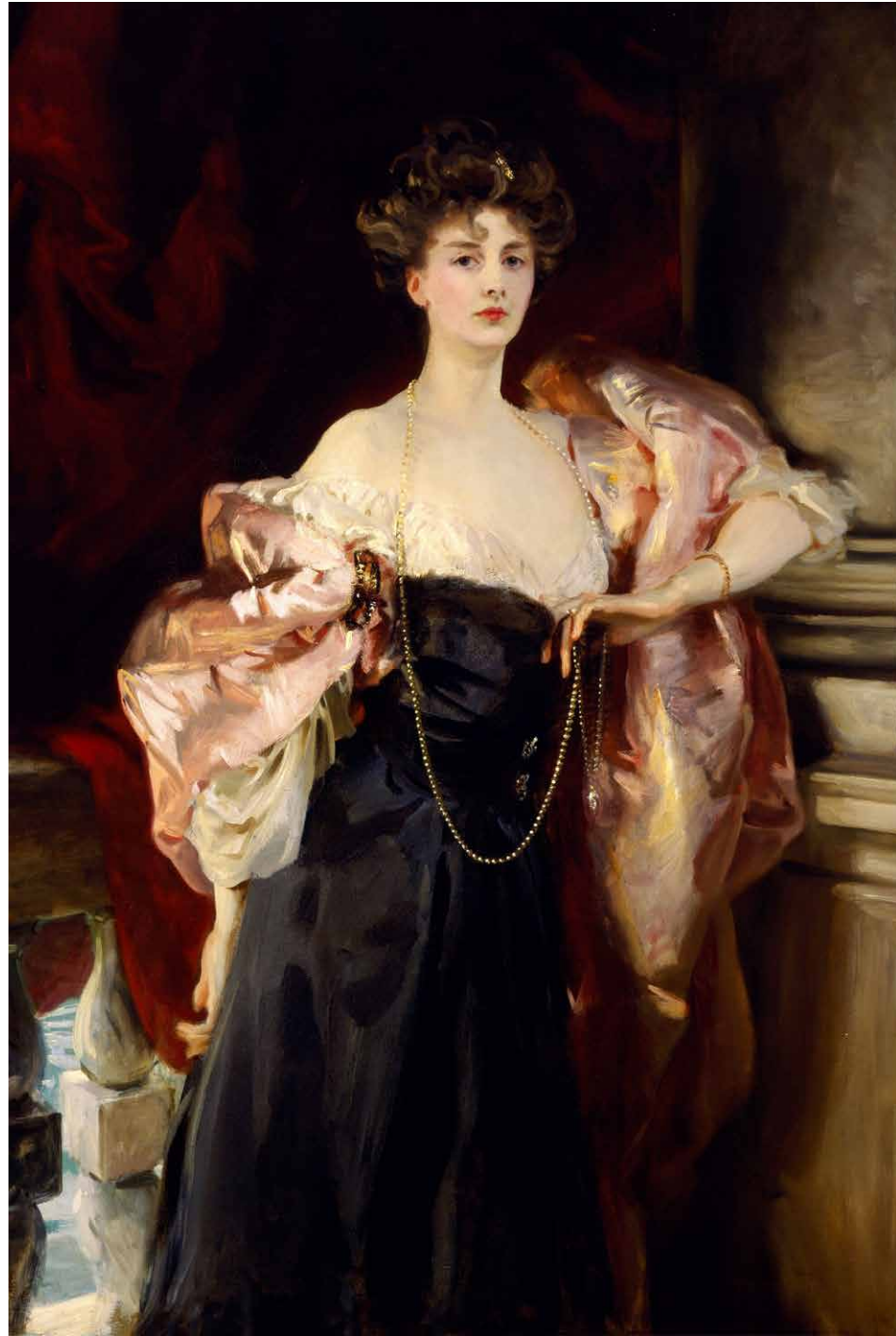
ARTIST'S IMPRESSION - NIGHTTIME VIEW FROM NORTH



ARTIST'S IMPRESSION - DAYTIME VIEW FROM SOUTH



ARTIST'S IMPRESSION - NIGHTTIME VIEW FROM SOUTH



Eridge Arts Club

The new Eridge Arts Club met for the first time in December and enjoyed a talk on "Walking with Polar Bears" by wildlife photographer, Gillian Lloyd. Gillian's beautiful photographs accompanied a fascinating talk, full of information and stories of Gillian's travels among the polar bears.

We are pleased to announce that the next EAC event will be a talk by local artist, Louis Ryan on "John Singer Sargent: Portraiture, Patronage and the Painter". Louis will talk about Sargent's

portraits of society figures, drawing on his experience as a professional artist to help his audience see Sargent's portraits from the artist's perspective. The talk is on Tuesday 16 March. Tickets £5.

Louis's talk is the second in a series of occasional talks recitals, exhibitions and visits organised by the new Eridge Arts Club. The aim of the club is to further appreciation and enjoyment of the arts. If you are interested in attending Louis Ryan's talk or future events, please email Mary Helson at mary.helson@gmail.com

First Aid Course

The Parish Council are considering supporting another First Aid Course run by the Red Cross later this year, for residents and workers in the Parish. It will take place in one of the village halls on a Saturday morning and last 4 hours, but participants are limited to 12.

If you wish to express interest in attending please contact Andy Macdonald-Brown andrew.macdonald-brown@frant-pc.gov.uk or 891273 – 07989555957

Eridge Garden Club

Our Spring meeting is on Wednesday 6th April at 7.30 pm in Eridge Village Hall. Kathrine Lynn will give a talk on "The Tulips of Amsterdam"

Kathrine will talk about the history of the tulip, and take us on a virtual tour of the beautiful Keukenhof gardens (pictured below) in Amsterdam.

Membership of Eridge Garden Club is £5 per year. You can also pay for each event if not a member £3. Please email Jane Stevens: stitchesjane@gmail.com with any questions.



Parish past

Frant once possessed a well-known brewery. The Brecknock Arms in Bells Yew Green was then known as the Royal Oak and the innkeeper, Tom Bachelor, brewed his own beer behind the pub and even along the edge of the green, certainly from 1862 and probably some time before. In 1866 he was approached by George Ware, who had ideas to expand and was obviously a well appreciated brand and with his money and enthusiasm the partnership was soon advertising "their celebrated family ales which from their pureness and freedom from adulteration have gained a great reputation." After a few years the business - by then run by Ware alone - had grown to the point that it had not only outgrown its series of sheds around the pub but was increasingly encroaching on the green.

Ware lived at Leafwood on the road to Frant and in 1893 he advertised for tenders to build a new brewery near his house, the cheapest coming in at £2,500. A massive four-storey building

and chimney resulted from where XXX ales and stout were marketed at 1/6d a gallon, about 7p in today's money. Inferior X ales were 1/-. They were obviously deep drinkers in those days! Ware died in 1901 and is buried in the churchyard but the business continued to grow for many years under his son, Reginald.

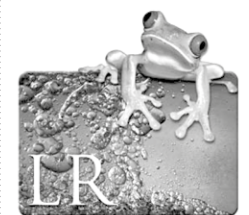
William Clark, who worked there or 50 years starting as a bottle-washer at 5/- a week, recalled that in the early days they only brewed twice a week, but latterly every day. The machinery was originally steam driven, later electric. Clark remarked that in his lifetime he had "brewed enough beer to sink a battleship but never lost his taste for it." As well as beer and stout the firm produced mineral waters and ginger beer - which a resident wrote "was really potent stuff." Presumably that means it was alcoholic unlike today. Ware's merged with Kelsey's in 1950 and brewing in the old building ceased; it was demolished soon after and Stubby Grove Industrial Park now

occupies the site.

Incidentally, even before it was the Royal Oak, the Brecknock was known as the Turk's Head (the insignia of the family then owning Scotney); the current name is a nod to the Earls Camden whose second title it is.

—Pat Wright

The "Parish News" is published by the Church and distributed free by volunteers. The publisher acknowledges the support of the Parish Council. Any views expressed in this magazine are not necessarily shared by the Publisher. The "Parish News" reserves the right to edit submissions as it sees fit. Publisher: Brendan Martin. Editor: Carmel Kinley. Design: Jonathan Christie. Advertising: Susan Piccioni.



Online Print Services

Printed locally by LR
Online Print Services
01892 752277
info@lr2k.co.uk
www.lr2k.co.uk
Printed on paper from
managed forests &
controlled sources.
Please recycle after use

Parish Diary: March/April 2021

» Wednesday, 10 March

The Arts Society Ashdown Forest,
Lecture; See page 9

» Tuesday 16 March

Eridge Arts Club Meeting
Eridge Village Hall 7.30pm; See page 12

» Tuesday, 22nd March

Frant Garden Club: Spadework talk;
Memorial Hall, 2.30pm

» Saturday 26 March

Public Parish Council Meeting -
Puffin Crossing; Frant Memorial Hall
2-4.30pm. See page 11

» Frant Parish Friendship Group

Thursday Exercise Classes; See page 10

» Wednesday 6th April

Eridge Garden Club Spring Meeting
Eridge Village Hall, 7.30pm

» Tuesday, 26th April

Frant Garden Club: Mick Lynn talk,
Memorial Hall, 2.30pm

Regular Meetings

Little Fishes: Baby & Toddler Group

Every Tuesday 10—11.30am in The
Stables, Frant. A warm welcome to all.
Encounter (School Years 6–13)
Contact Ed Pascoe for more information:
frant youth@gmail.com

Coffee Morning at The Stables, Frant

Every Wednesday, 10:30am—12noon.
Come for a hot drink, a cake and a chat.
Festival Church Kids During 5pm
outside service.

**Parish News can be downloaded
from: www.frantchurch.org or www.eridgechurch.org
Advertising enquiries: 750285 or
susan.piccioni@btinternet.com
Contributions for our next issue
should be sent to the Editor: carmel.
kinley@gmail.com or 01892 750217
Next deadline: 10th April 2022**

Useful contacts

Frant

Frant CofE Primary School
Joanna Challis: 750243
Frant and Eridge Church Office
9-12am Mon/Wed/Fri; 01892 752261
office@frantanderidgechurches.org.uk
Frant Church Youth and Kids
Ed Pascoe: frantyouth@gmail.com
Frant Bowls Club
Barry Dean: 661386; barryglenys68@hotmail.com
Frant Cricket Club
David Pearson: 750789
Frant Garden Club
Dianna Tennant: 752029
Frant Panto & Drama Society
Naomi Berwick; 07599 162222;
frantpanto@gmail.com
St Alban's Bell-Ringers
Mary Freestone: 750269
Frant Stables
Julie Pascoe: 07850 091428;
juliedanielle@hotmail.co.uk
Frant Parish Friendship Group
Brian Gill: 750266
Frant Film
Greig Bannerman: 01892 750322
greigban@gmail.com
Frant Open Spaces Group
Jan Steadman: steadman.jan@gmail.com
Frant Memorial Hall
Sharon Warwick: 750185

Eridge

Eridge Garden Club
Jean Howells: 864310
Eridge Cricket Club
Luke Forbes: 670073
Eridge Village Hall Hire
www.eridge-village-hall.co.uk
Eridge Choir
Tracy Bryant

Bells Yew Green

Bells Yew Green Chapel
Peter Arrowsmith: 01892 610309
BYG Cricket Club
Andy Brooks: 07876 011782
Short Mat Bowls Club
Pam Mepham: 891426
BYG Village Hall Hire
Chris Bacon: crbacon79@gmail.com
Friends of Bells Yew Green
07944 712000

Council contacts

Chairman

Johanna Howell: 750141
johanna.howell@frant-pc.gov.uk

Frant Ward

Ann-Frances Luther:
ann-frances.luther@frant-pc.gov.uk
Johanna Howell: 750141
johanna.howell@frant-pc.gov.uk
Debby Park: 319906
deborah.park@frant-pc.gov.uk
William Rutherford: 752254
Colin Steadman: colin.steadman@frant-pc.gov.uk

BYG Ward

Stuart Crookshank: 518631
stuart.crookshank@frant-pc.gov.uk
Andy Macdonald-Brown: 891273
andrew.macdonald-brown@frant-pc.gov.uk

Eridge Ward

Andrew Best: 5279319

Clerk to the Council

Rosie Barnes: 653357; clerk@frant-pc.gov.uk; www.frant-pc.gov.uk

Wealden District Councillor

Johanna Howell: 750141 clld.johanna.howell@wealden.gov.uk
Keith Obbard: 07941 578427 clld.keith.obbard@wealden.gov.uk
Bob Standley: 783579 clld.robert.standley@wealden.gov.uk

County Councillor

Johanna Howell: 750141
johanna.howell@frant-pc.gov.uk
Bob Standley: 783579

Parish Council meetings

Full PC meetings are held at 7.30pm
every 3rd Wednesday of the month.
Planning meetings are held on the first
Monday of the month.

MP for Wealden

Nus Ghani MP: nusrat.ghani.mp@parliament.uk

Police Contact Details:

To report a crime or incident dial 101
For other police enquiries contact the
Wealden unit on 01273 404938 or
www.sussex.police.uk/wealden/

BURSLEM
STONEMASONS OF DISTINCTION SINCE 1880



**NEW MEMORIALS
ADDITIONAL
INSCRIPTIONS
RENOVATIONS
& CLEANING**

www.burslem.co.uk

Tel: 01892 750120
enquiries@burslem.co.uk

Visit our showroom at:
**Stubby Grove Works,
Bells Yew Green Road,
Frant, East Sussex TN3 9BT**

Monday - Friday 9.30am - 4pm

BRAMM
REGISTERED COMPANY



**THE
GEORGE
INN**
AT FRANT

Good food & real ales | Large, child friendly enclosed garden.
36 High Street, Frant, Nr Tunbridge Wells TN3 9DU. Tel: 01892 750350

**No Call-out Fees
Fully Insured**

07722 900 757
01892 519371

TAPS & TOILETS
Repairs & Replacements

AD PLUMBING SERVICES
— Tunbridge Wells Local Plumber —

ENSOR
Interior design
www.ensorinteriordesign.co.uk



01892 750101
frant@ensorinteriordesign.co.uk
Showrooms in Frant, TN3 9DT and Cuckfield, RH17 5JU

Experience is the key



You can depend on our 120+ years experience successfully selling property

Now more than ever, experience is the key to a successful sale, along with an outstanding level of personal service. Established in 1900 our proven track record speaks for itself. Why leave it to chance?

Find out how much your home is worth...

BOOK YOUR MARKET APPRAISAL ONLINE OR BY PHONE

Wadhurst Office 01435 873 999

sussex@lambertandfoster.co.uk

www.lambertandfoster.co.uk



Gill Weavers
ESTATE AGENCY



Sue Carter
ESTATE AGENCY



**Lambert
& Foster**

OFFICES ALSO AT PADDOCK WOOD, CRANBROOK & HYTHE



the **BESPOKE CARE** company
providing care • enabling independence

Live-in Care





We are an independent, family run
agency specialising in live-in care in
Kent & Sussex.

Live-in care enables our clients to remain
in the security & comfort of their own
homes, with dedicated one-to-one care.

Tunbridge Wells - 01892 518400
www.bespokecarecompany.co.uk




FULLER'S


FULLER'S FARM SHOP
 Bunny Lane, Eridge, Tunbridge Wells,
 TN3 9BY
 Tel: 01892 541238
 Opening Hours:
 Mon - Sat 9am - 5.30pm
 Sun - 10am - 4pm

FULLER'S BUTCHERS
 5 Nelson Road, Tunbridge Wells,
 TN2 5AW
 Tel: 01892 526563
 Opening Hours:
 Mon - Fri 8am - 5.30pm
 Sat - 8am - 2pm



RICHARDS FENCING Ltd

Family run business based between Crowborough and Tunbridge Wells, offering supply and installation of all types of fencing and gates.



T: 01892 770186 E: andrew@richards-fencing.co.uk W: richards-fencing.co.uk




Paul Keineder
 Property Maintenance & Renovation

Mobile: 07917 523 979 Email: paulkeineder47@yahoo.co.uk

Consultation • Estimates • Plastering • Painting
 Decorating • Carpentry

VIOLIN LESSONS



£15 per half hour lesson
 (school holidays only)
 with Oxford University Music
 Undergraduate, Jemima Kinley.

Includes comprehensive written
 lesson feedback. DBS checked
 and fully insured.

Please contact 01892 750217 or
 jemima.kinley@gmail.com

"My daughter didn't have violin lessons for four months due to the lockdown. After just a few lessons with Jemima, her technique and confidence have vastly improved." —Uju



Pantiles Chambers
 85 High Street
 Tunbridge Wells
 Kent TN1 1XP
 T: 01892 752277
 M: 07740 611702
 E: info@lr2k.co.uk
 W: www.lr2k.co.uk

**Promote your business, society,
 club or event with our one stop
 Design and Print Service**

Printing, In-house Graphic Design &
 Photography for your printed brochure,
 newsletters, manuals & trade cards.

- Brochures • Booklets • Stationery
- Posters • Point of sale • Post cards
- Printed boxes • Printed carrier bags

**See our
 website for
 current
 offers**



BalancedTM Accounting

Local Chartered Accountants and Registered Auditors,
 our services for individuals and small/medium sized
 businesses include: tax returns, accounts, VAT, payroll,
 audit and other tax and accountancy services.

Based at Unit K, The Brewery, Bells Yew Green,
 we're ideally situated for clients in Frant, Eridge,
 Bells Yew Green and surrounding areas.

Please contact Hazel Wells, FCA for an informal chat
 or to arrange a FREE initial meeting.

www.balancedaccounting.co.uk
0330 111 5010
contact@balancedaccounting.co.uk